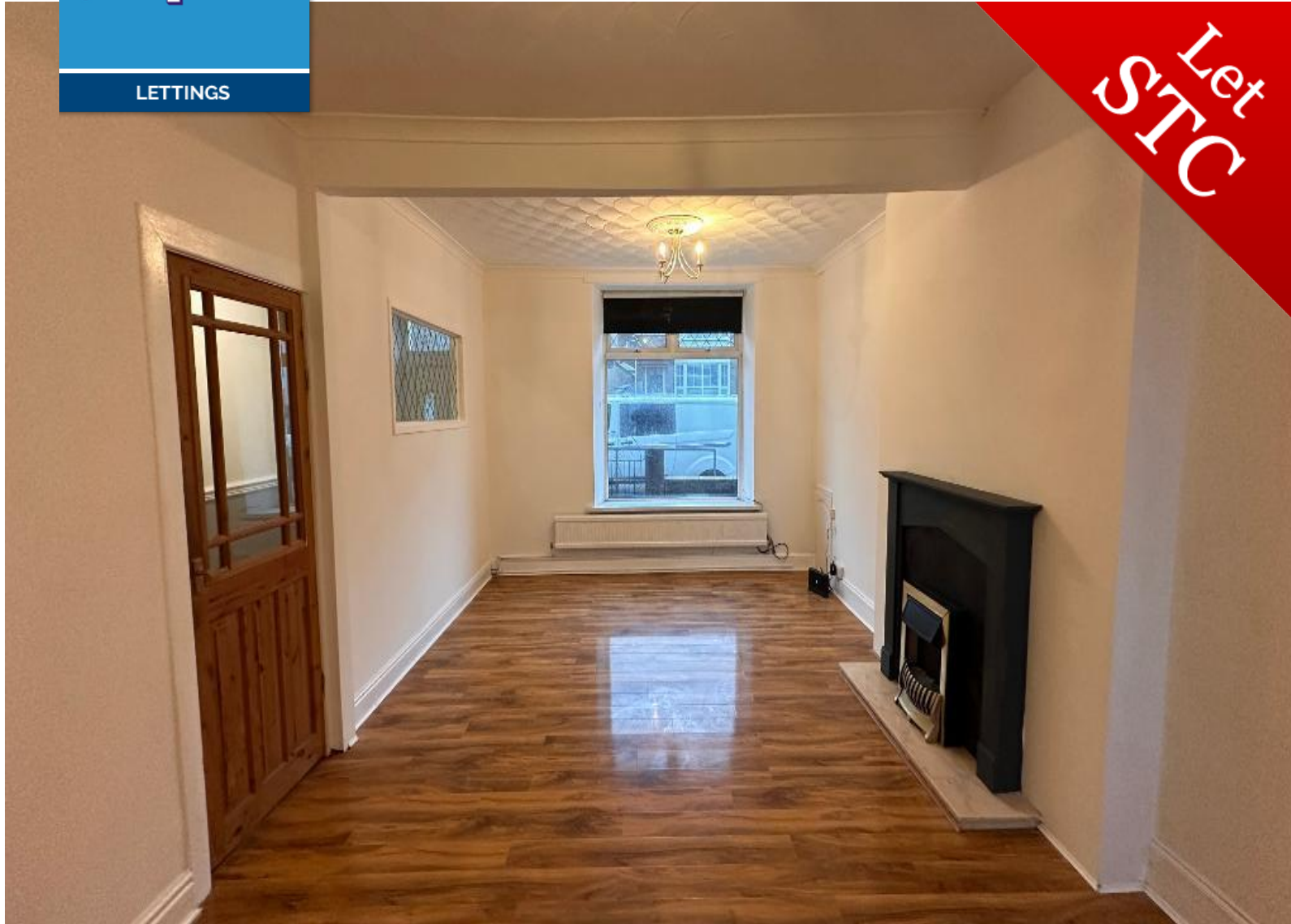


Let
STC



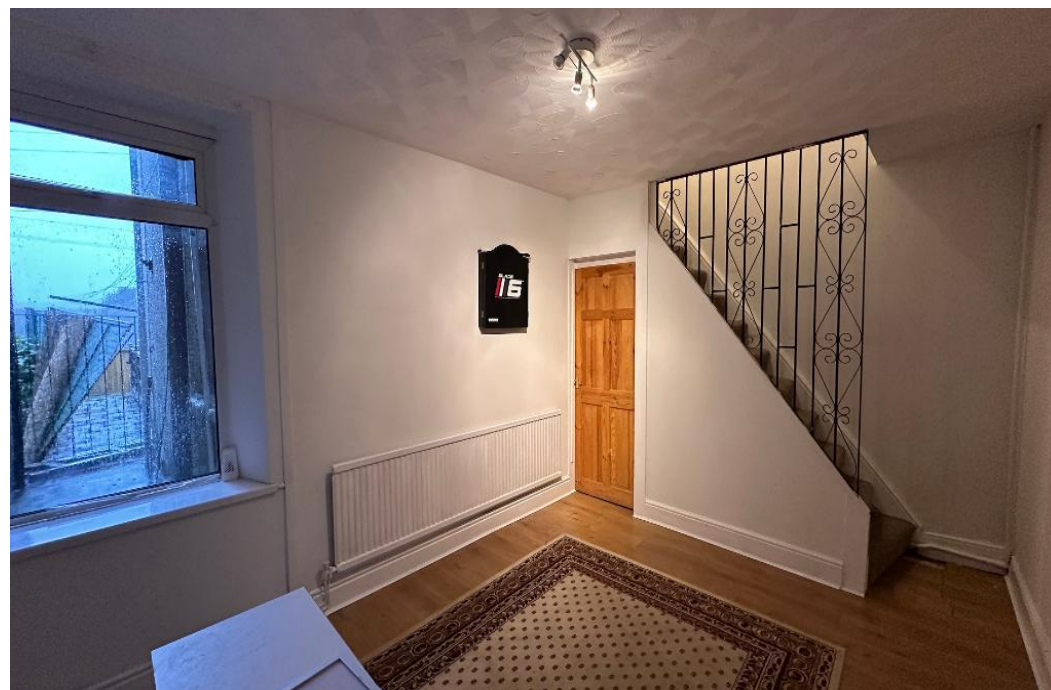
DESCRIPTION

Mid Tce , three story larger than average property situated in the village of Edwardsville. Walking distance to train station, with half hourly trains to Cardiff & Merthyr. Hallway, living room, fitted kitchen , to lower level , utility, play room and shower room, first floor, bedrooms and bathroom. Garden has views of the surrounding area.













DISCLAIMER

These particulars are thought to be materially correct though their accuracy is not guaranteed and they do not form part of any contract. All measurements are approximate and we have not tested any fitted appliances, electrical or plumbing installation or central heating systems.



3 Bargoed Terrace
Treharris
Mid Glamorgan
CF46 5RB

Landline: 01443 410646

Mobile: 07817412264

E-mail: info@first4rentals.co.uk

Web: www.georgeestatesuk.co.uk